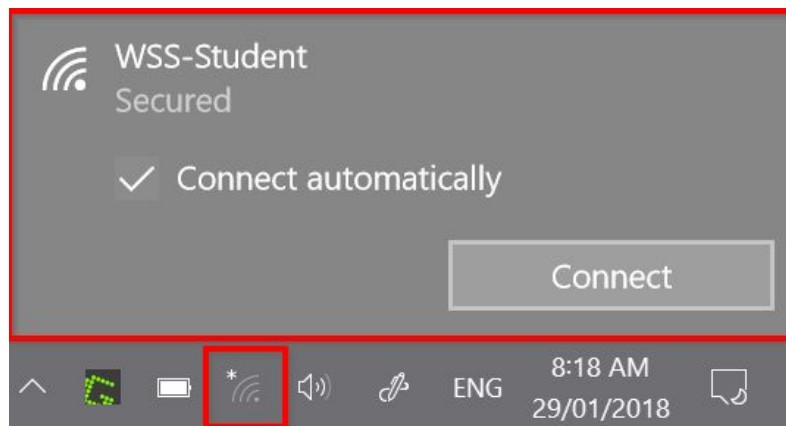


ICT: How to Connect to WiFi - Windows

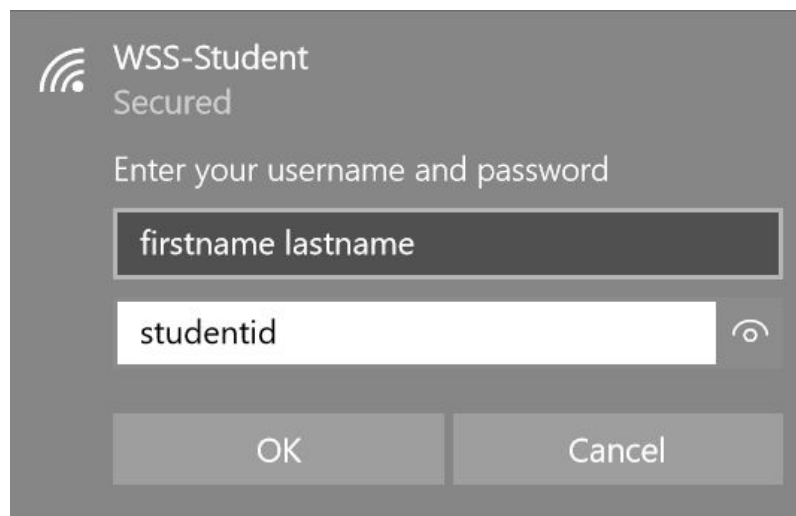
Connecting to the WiFi is a two step process

Step 1 - Connect to the Student WiFi

- 1) Click on the **'WiFi'** icon on the taskbar.
- 2) You will then select the WiFi Network **'WSS'**.
- 3) Then Click **Connect**.



- 4) You will then need to enter a username and password.
 - a) **Username:** firstname lastname
 - b) **Password:** 00student ID



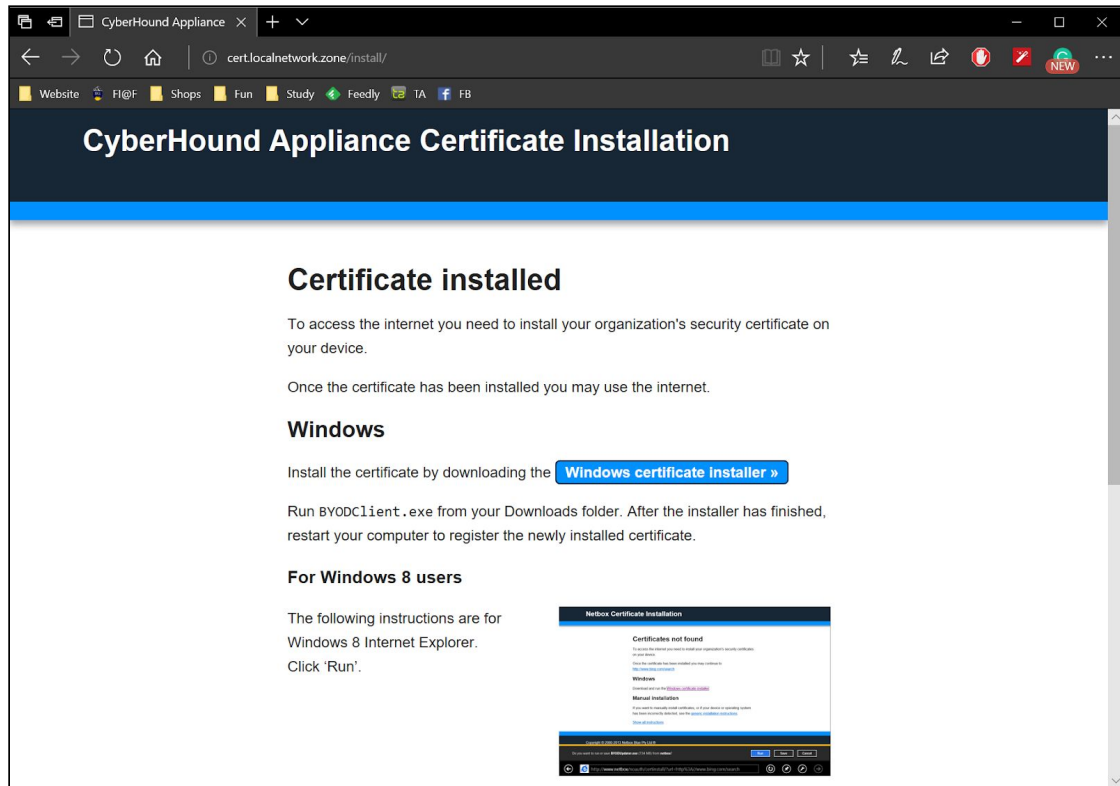
- 5) You will get a final message, which you will click on **'Connect'**.

You are now connected to the WiFi

Step 2 - Connect to the Internet

- 1) Open a web browser (Edge, Google Chrome etc..) and it should redirect you to **cert.localnetwork.zone** (The Image below)

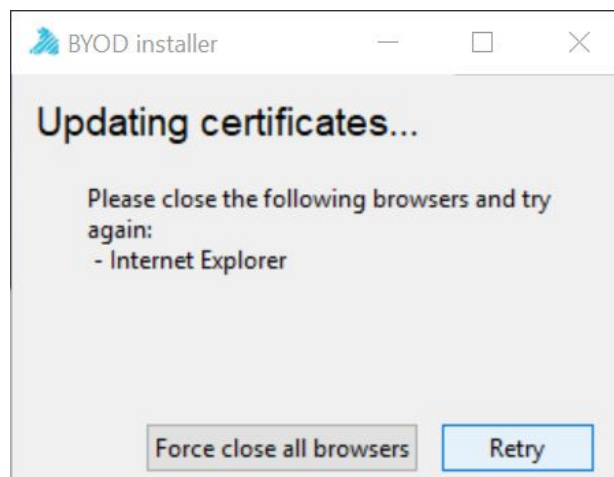
If you don't see this page, go to the following web address: **Go/**



- 2) When you see this page, you will need to click on 'Windows Certificate Installer'.
- 3) You will be asked to save the file, choose either **Run** or **Save**.



- 4) Once downloaded, run the file 'BYODClient.exe' you will see a similar window.



- 5) You will then follow the prompts and close the 'BYOD Installer' Window when asked.

You are now connected to the Internet.